



MONTHLY MEMBERSHIP PROGRESS REPORT

District 7 L

Results as of: 05/31/2019

GMT: GREGORY GILLIAM

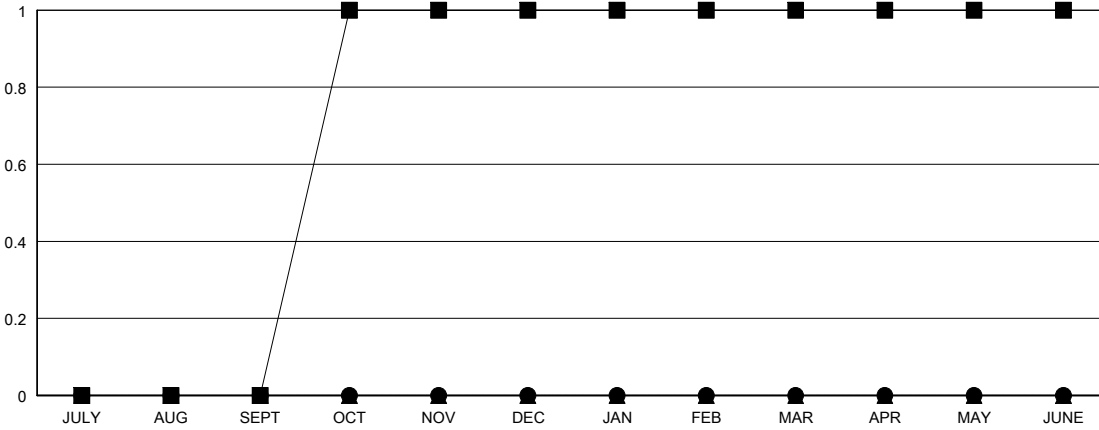
LOCATION ARKANSAS

GMT CA

Clubs			
RESULTS FOR 2018-2019			
QUARTER	NEW CLUB GOAL	NEW CLUBS	DROPPED CLUBS
JULY/AUG/SEPT	0	0	0
OCT/NOV/DEC	1	0	1
JAN/FEB/MAR	0	0	0
APR/MAY/JUNE	0	0	0

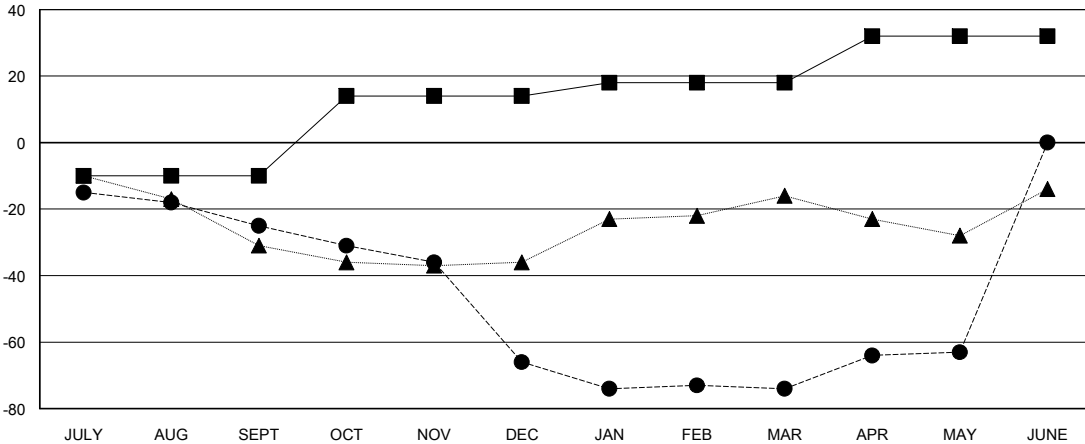
Members			
RESULTS FOR 2018-2019			
QUARTER	MEMBER GROWTH NET GOAL	MEMBER GROWTH ACTUAL	DROPPED MEMBERS ACTUAL (including transfers)
JULY/AUG/SEPT	-10	18	39
OCT/NOV/DEC	24	17	55
JAN/FEB/MAR	4	23	29
APR/MAY/JUNE	14	20	9

GOALS AND ACTUAL NEW CLUBS CUMULATIVE



- - CURRENT YEAR GOALS FOR NEW CLUBS
- - CURRENT YEAR ACTUAL NEW CLUBS
- ▲ - LAST YEAR ACTUAL NEW CLUBS

GOALS AND ACTUAL MEMBERS CUMULATIVE



- - MEMBER GROWTH NET GOAL
- - MEMBER GROWTH ACTUAL
- ▲ - LAST YEAR MEMBERSHIP ACTUAL

DROPPED CLUBS: 1

16 CLUBS OF 29 ADDED 1 OR MORE NEW MEMBERS

GENDER DISTRIBUTION	
MALE	456 (58.99%)
FEMALE	317 (41.01%)
Women Percentage Fiscal Year Goal: 40%	

DROPPED MEMBERS	
DECEASED	9
CLUB CANCELLED	7
OTHER	115
TOTAL	131

[CLICK HERE FOR CUMULATIVE MEMBERSHIP DATA](#)

TOTAL FAMILY UNIT MEMBERS	121
FAMILY MEMBERS PAYING HALF DUES	62